

Contribution to ecologically sustainable development

- The landscape development concept (LDC) provides a succinct and **comprehensive overview of ecological conditions** in the region as well as the scope of possible ecological action.
- It enables implementation and co-ordination of **environmentally-related measures** by the nature protection authorities and other implementary bodies **in an efficient and ecologically effective manner**.
- It **simplifies and speeds up** the formulation of expert opinions and comments on the part of nature conservation authorities, i.e. on regional plan reviews, regional land use planning, environmental impact assessments, and interventions of supralocal significance.
- It enables organisations responsible for planning and implementation, such as communities in particular, to optimise in good time the ecological aspects of their projects in consultation and co-ordination with nature conservation authorities, thus **gaining a more reliable basis for planning**.
- Thanks to **compilation of all relevant nature conservation aspects**, time and costs can be saved in individual planning cases, and where applicable, can help prevent expensive planning mistakes.
- The LDC provides the standing conference of local planning authorities with a sound **ecological basis for the development of sectoral regional plan objectives**.
- The **contents are self-explanatory**. All maps are presented in digital form, facilitating their consideration in decision-making processes as well as the continual review and extrapolation of the map material.

Distinctive features

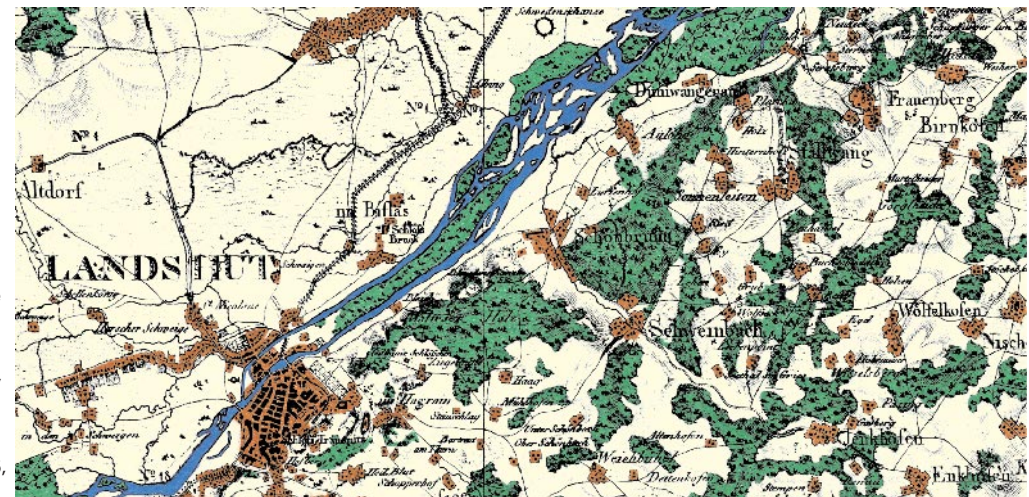
- The LDC is the **landscape planning concept** of the nature conservation authorities and is not legally binding.
- It has gained the **approval of all responsible nature conservation authorities** as the overall concept for nature conservation and landscape management.
- It provides **equal-ranking treatment of all nature conservation and landscape management issues**, particularly concerning recreational prerequisites and the protection, care and development of protected assets (integral concept).
- It is a **compilation of important available data and planning foundations**, such as soil maps, biotope and species protection maps, species and biotope protection programmes, and expert opinions, and thus facilitates access to information.
- It is a **nature conservation contribution** towards the review and extrapolation of the Landshut Regional Plan (particularly concerning the landscape master plan).
- It involves a **self-explanatory method** (transparency).
- It is **swift and easy to use** thanks to presentation on CD ROM.

Contact persons: Regierung von
Niederbayern - Höhere Naturschutzbehörde
Regierungsplatz 540, D-84028 Landshut
Tel.: ++49 +871-808-01

Bayerisches Landesamt für Umweltschutz
Referat Landschaftsentwicklung
Bürgermeister-Ulrich-Str. 160
D-86179 Augsburg, hans.leicht@lfu.bayern.de

Published by: Bayerisches Landesamt für
Umweltschutz - an authority within the area
of responsibility of the Bavarian State Ministry for
Regional Development and Environmental
Protection - © 2000

Produced by: Planungsbüro Blum, Lindenstr. 25,
D-85354 Freising, info@pb-blum.de



Landscape Development Concept for the Landshut Region

Nature Protection and Landscape Management Concept

Instrument for Ecologically Sustainable Development

Protection of natural assets

Biotope network

Recreation prerequisites and open space protection

Settlement and infrastructure development

Resource extraction

Regional planning

Project description

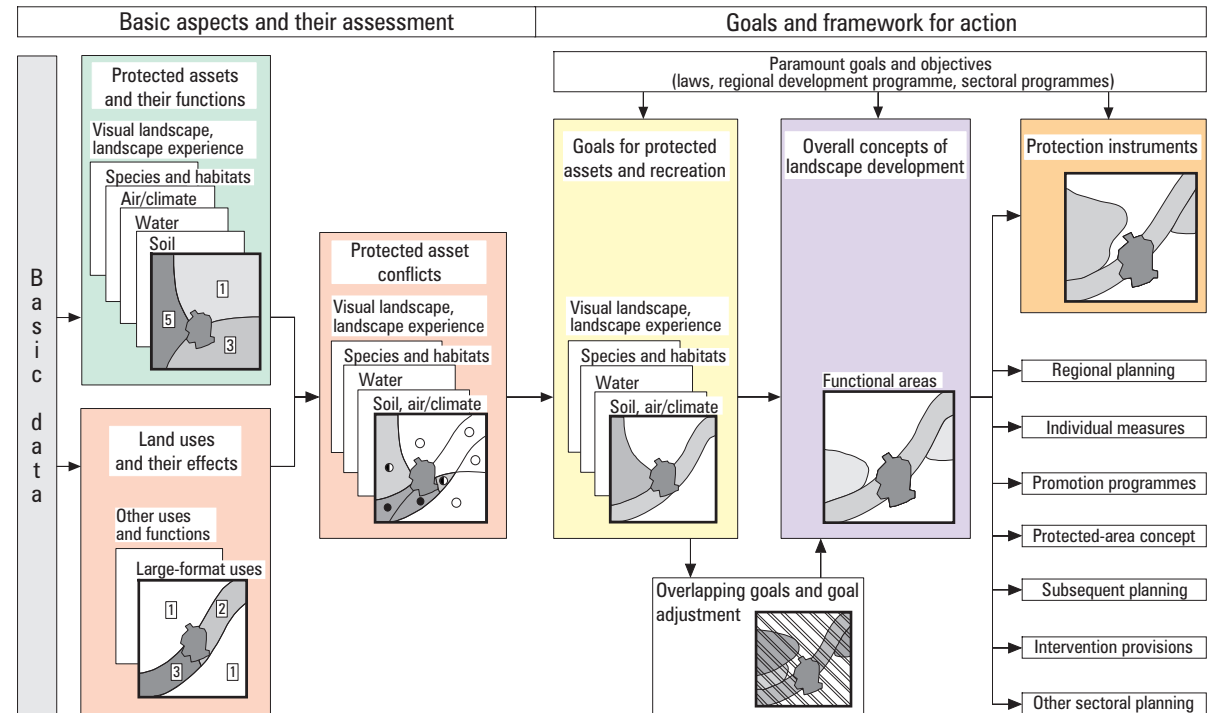
In 1997, the Bavarian Regional Environment Agency was requested by the Bavarian State Ministry for Regional Development and Environmental Protection to provide the Higher Nature Conservation Authority of the Government of Lower Bavaria with support in the formulation of a landscape development concept for the Landshut region. A planning office was commissioned to execute the work. This was completed in 1998, the same year that the resulting expertise was presented to the public by Dr. Werner Schnappauf, Bavarian Minister of the Environment.

Regional characteristics

The Landshut region, which covers an area of 3,768 square kilometres, is made up of the administrative districts of Dingolfing-Landau, Landshut, Rottal-Inn, the southern section of the Kelheim administrative district (greater Mainburg area) and the autonomous city of Landshut. In comparison to the rest of Bavaria, the Landshut region is still characterised by a relatively high degree of agriculture. Due to the development of the region and its proximity to Munich, there is a considerable need for building ground for housing, trade and industrial purposes. Land is also required for the increasing extraction of gravel, sand, loam and bentonite.

Concept contents

The landscape development concept consists of a **basic data section** and a **target section**, and is presented in textual and 1:100,000 map form. The concept is available from the Bavarian Regional Environment Agency (Bayerisches Landesamt für Umweltschutz) on CD ROM at a price of DM 19.-.



Content of the basic data section

- Overview of the data on which plans can be based, such as natural foundations and land uses
- Important characteristics of the protected landscape as sets of soil, water, air/climate, habitats, the visual landscape, and the way landscape is experienced
⇒ 5 protected asset maps
- Land uses and their effects on protected assets
⇒ 2 land use maps
- Spatially relevant conflicts related to individual protected assets
⇒ 4 conflict maps

Content of the target section

- Target concepts for individual protected assets and nature-related recreation
⇒ 4 target maps
- Integrated overall concept of landscape development
⇒ Map of the overall concept of landscape development
- Measures and implementation proposals, i.e. concerning regional planning protection instruments, a protected-area concept, a regional biotope network system, and information for other land uses
⇒ Map of protection instruments