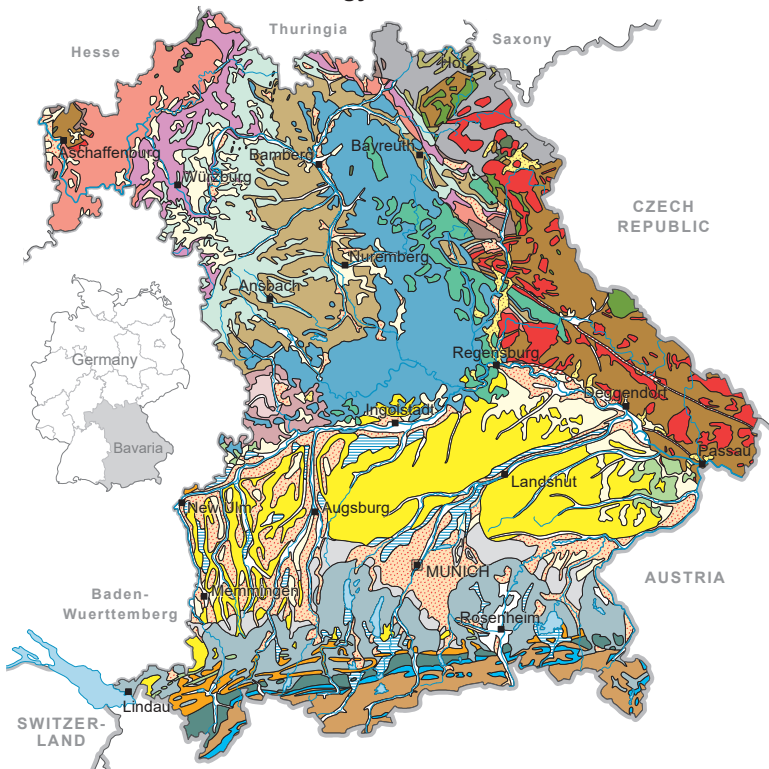


# Geology of Bavaria



- Quaternary Sediments**
- Alluvial and lacustrine sediments
  - Peat
  - Aeolian sand, Loess, Loam
  - Fluvial gravel and sand, Pleistocene
  - Moraine deposits, Late Pleistocene
  - Moraine deposits, Early-Middle Pleistocene
- Molasse**
- Upper Freshwater Molasse
  - Upper Marine Molasse
  - Lower Freshwater and Marine Molasse
- Alps**
- Helvetic and Flysch Zones
  - Jurassic, Cretaceous, Paleogene
  - Permian, Triassic

- Cuesta Region**
- Neogene sediments
  - Basaltic volcanic rocks
  - Ries basin deposits
  - Ries impact ejecta
  - Cretaceous
  - Jurassic
  - Sandsteinkeuper
  - Lower Keuper, Gipskeuper
  - Muschelkalk
  - Buntsandstein
  - Upper Carboniferous-Permian

- Basement**
- Granite, Granodiorite, Diorite
  - Cambrian-Lower Carboniferous
  - Meta-Basalt
  - Amphibolite, Serpentine
  - Gneiss, Mica schist, Migmatite
  - Mylonite, Cataclasite, Quartz vein („Pfahl“)

0 25 50 100 km